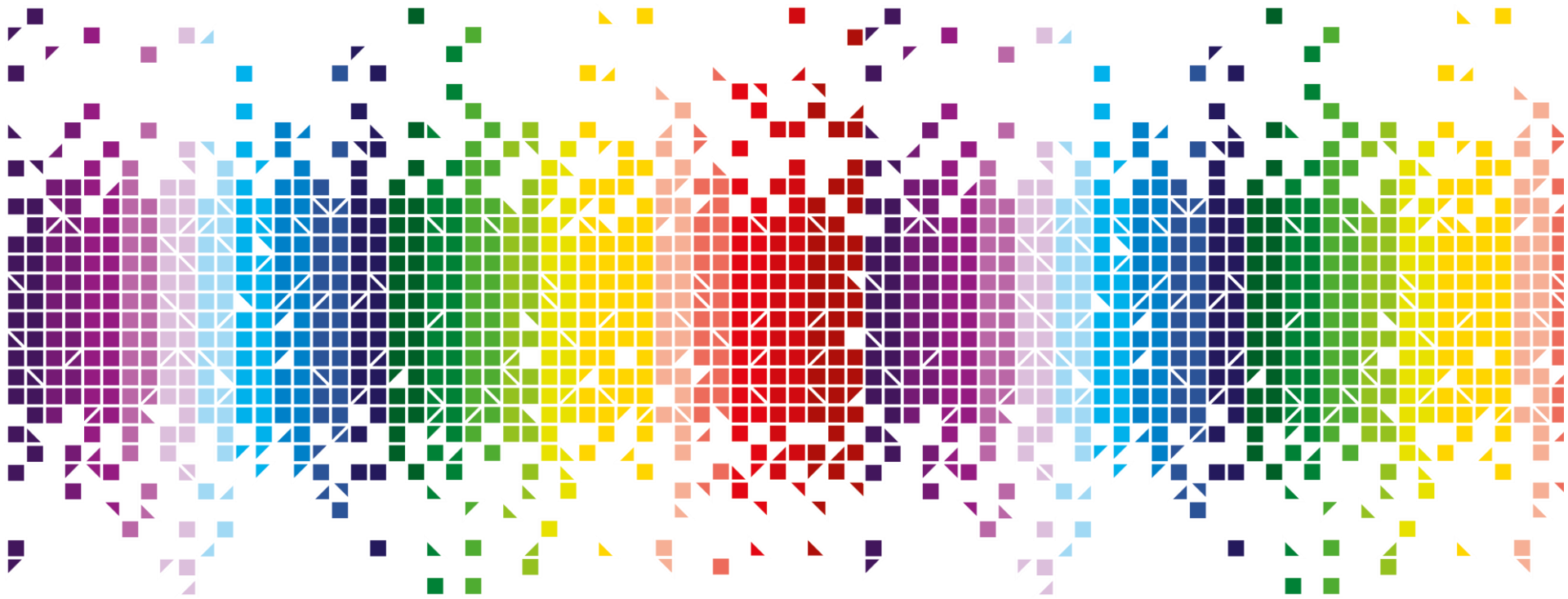


# Retail Market Assurance Services for the Irish Electricity Market

Sarah Fuller

16 January 2019





# V12.00.00 Market Design Release

- CRU has approved v12 Self Assessment Outcome report
- Formal Assessment completed on 8 January
- IPT scheduled for Feb/March

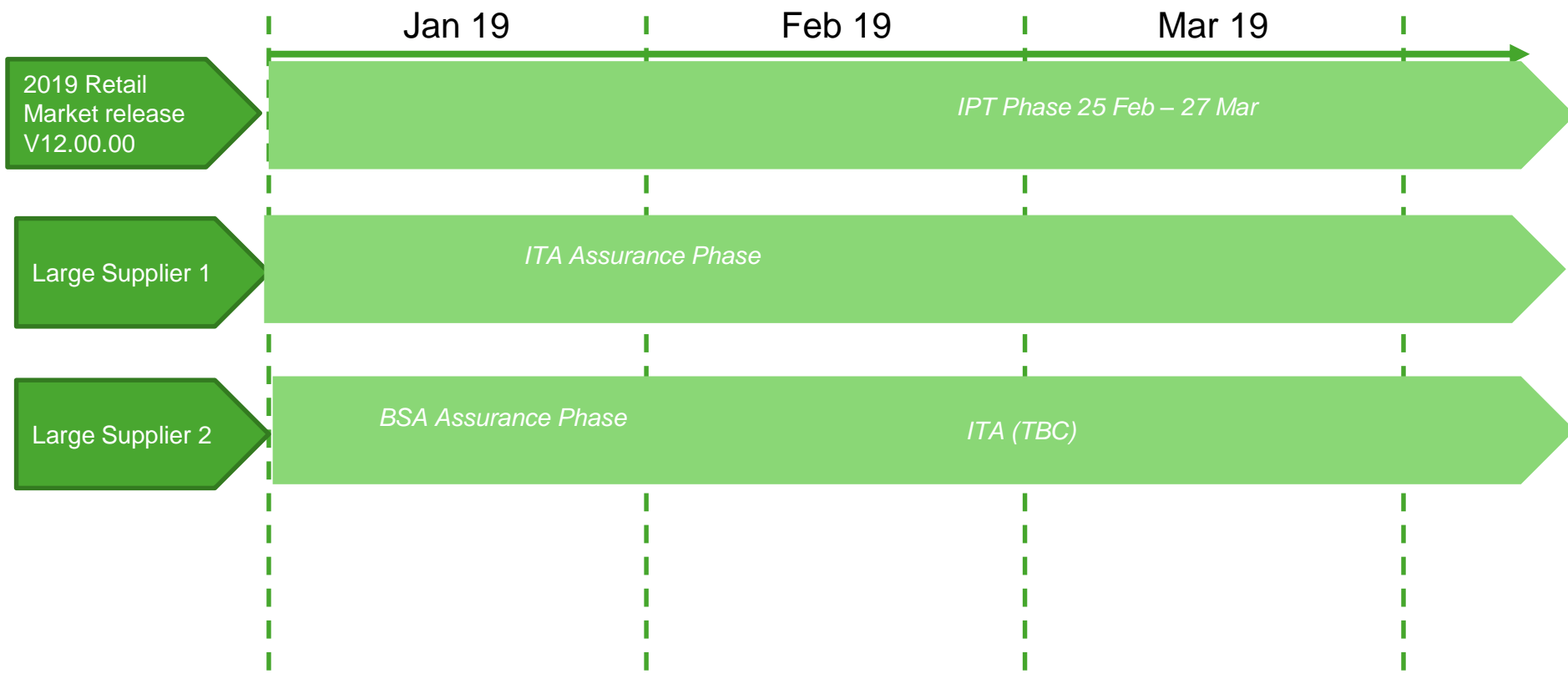


# New Entrants

- 2 Large Suppliers progressing through Market Entry Assurance
  - Supplier 1 has completed BSA Assurance stage and will now progress to ITA phase
  - Supplier 2 is progressing through BSA stage



# Forward Work Plan





# Questions



**Sarah Fuller**

Assurance Contract Manager

[Sarah.Fuller@gemserv.com](mailto:Sarah.Fuller@gemserv.com)

+353 (0)1 669 4630



**Elizabeth Montgomerie**

Assurance Consultant

[Elizabeth.Montgomerie@gemserv.com](mailto:Elizabeth.Montgomerie@gemserv.com)

+44 (0)7703 740 282