

Form A – IGG Design Discussion Request

Discussion Request Number	Title	Priority
DR 0151	Amending Generator Unit ID and Generation Unit ID	<i>High</i>

Name of Requesting Organisation	RMDS
Contact Name	Richard Bloomfield
Date Request sent to RMDS	14th September 2007

Date	Version	Reason for Change
14/09/2007	1.0	Discussion request created.
20/09/2007	1.1	Internal amendments
25/09/2007	1.2	Internal amendments
26/09/2007	1.3	Internal amendments
02/10/2007	1.4	Internal amendments
12/10/2007	1.5	Internal amendments

Detail of Discussion Request
<p>Background:</p> <p>A number of documentation issues have arisen with the Generation Unit ID data item that requires correction: (Please note that schema 6.1 is correct and does not require change.)</p> <ul style="list-style-type: none"> • 'Generation Unit ID' is a data item that appears on numerous market messages in the schema in all versions of the market design. • Under SEM another entity (a wholesale definition) called 'Generator Unit ID' is introduced. This is part of the retail market design from version 6.0 onward. However, 'Generator Unit ID' has not been added to the schema and should not appear as a field in any market message documentation. • Under SEM, the message field 'Generation Unit ID' is modified to carry one of a range of entities, depending on context. These entities are 'Generator Unit ID', 'Arrangement ID' or the legacy 3 digit 'Generation Unit ID'. • In ARIS v6.0 'Generator Unit ID' was incorrectly used in place of 'Generation Unit ID' in some message definitions (341, 594, 597 & 598). Some MCRs incorrectly use this term in text but do not introduce the error into the market design. Generator Unit ID is also referenced in supporting text in a number of places. • Two steps are proposed to correct these issues: <ol style="list-style-type: none"> 1. The SEM MCRs that impact on messages and data items (MCR 112, MCR 120 and MCR 143) will be corrected and reissued at a new version no. 2. This Discussion Request will redefine the message field 'Generation Unit ID' as a container and will correct references to Generator Unit ID as a message field in the supporting information.

Detail of Discussion Request

This DR also seeks agreement to correct any text in MCRs with incorrect references to Generator Unit ID instead of the message field Generation Unit ID to avoid confusion in the MCR record.

Purpose :

This DR is intended to redefine the message field 'Generation Unit ID' as a container and to correct the incorrect references to Generator Unit ID in the supporting information. This will be included in version 6.1 of ARIS. Version 6.1 of the schema is correct and does not require change. This DR also seeks agreement to correcting incidental references in MCRs to 'Generator Unit ID' where these are incorrect.

Approach :

- Redefine the message field Generation Unit ID as one that can carry either Generator Unit ID, Arrangement ID or the legacy 3 digit Generation Unit ID depending on context.
- Correct the information in the following MCRs:
 - MCR 060
 - MCR 066
 - MCR 077
 - MCR 094
 - MCR 095
 - MCR 096
 - MCR 097
 - MCR 112
 - MCR 120
 - MCR 132
 - MCR 134
 - MCR 143

These changes impact upon the supporting text detailing market processes: MPD15 and MP16 2.1.

Reason for Discussion Request

We are seeking market approval to rectify this discrepancy with the Generator Unit ID entity. We seek approval to amend the ARIS documentation to clarify the terms Generator Unit ID and Generation Unit ID in the ARIS model.

We also intend to update all of the MCRs listed that contain references to Generator Unit ID as a message field, and create new versions of these documents if required. This is intended to avoid any possible confusion over which term to use in the future, and also to try and clarify the use of Generator Unit ID and Generation Unit ID in our documentation.

We are also introducing a new definition of Generation Unit ID (shown at the bottom of this DR) that will clarify its usage on market messages.

This is a documentation change alone. The market messages in the schema have never been changed, and have always used the field name Generation Unit ID. Thus no amendments to the schema are required.

Market Design Documents impacted by Request

ARIS Market Design v6.1

Detail of Discussion Request	
MCR 0060 – New Message to contain customer details on conversion from NQH to QH.doc	
MCR 0066 – Provision of Generator messages to Supplier MPCC.doc	
MCR 0077 Remove the drop down list from the Generator Unit ID field in the webforms.doc	
Draft MCR 94 for MPD 2 v1.1.doc	
Draft MCR 95 for MPD 6 v1.1.doc	
Draft MCR 96 for MPD 20 v1.1.doc	
Draft MCR 97 for MPD 15 v1.1.doc	
Draft MCR 112 for MPD 16 (2_1) v1.1.doc	
Draft MCR 120 for Data Items and Definitions v1.1A.doc	
MCR 132 Updates to Meter Point Registration Rejection Market Messages v1.0.doc	
MCR 134 Changing the description of Reject Reason Code 'SSS' v1.0.doc	
MCR 143 – Update to the xml schema to remove a pattern validation on the GUID field.doc	
Date of IGG where discussed	18 th October 2007
Change Request xref (if applicable)	N/A

PART 2 MARKET ASSURANCE:				
Applicability				
ESB Networks	Suppliers	TSO	SSA	Generators
X	X			
Scope of Test				
Connectivity	DTT	MSA	IPT	Other
			No. Of Scenarios	

Scope of Discussion Request							
Correction to Documentation	Business Process	Market & MP Systems	MPCC	Readings Processor	Market Gateway	Schema	Web Forms
X							

Data Definition Changes

Attributes	
Name	Generation Unit ID
Description	<p><u>Generation Unit ID Data Item</u></p> <p>The Generation Unit ID data item is the pre-SEM 3 digit Generation Unit ID. This will still appear on the following messages post-SEM: 341, 504, 504S.</p> <p><u>Generation Unit ID Message Field</u></p> <p>Under SEM, the Generation Unit ID message field is a multiple-purpose message field which carries the 9-character SEM Participant Generator Unit ID (in the format GU_nnnnnn), or the 4-character Non-Participant Generator Export Arrangement ID, or the pre-SEM 3-character Participant Generation Unit ID, depending on context.</p> <p>For the following messages, the Generation Unit ID will be populated with the Generator Unit ID value: 594, 597.</p> <p>For the following messages, the Generation Unit ID will be populated with the Arrangement ID value: 598, 341 (Non-Participant Generator Export)</p> <p>For the following messages, the Generation Unit ID will be populated with the Generation Unit ID value: 504, 504S, 341 (Participant Generator Export)</p> <p>For the following messages, the Generation Unit ID will be unpopulated: 101, 101P, 102, 102R, 102P, 105, 341 (Import)</p>
Allowable Codes on Message	This field can be populated with any value up to 9 characters long
Composition Instructions	<p>As required by the specific process, the Generation Unit ID field will contain the Generator Unit ID, Arrangement ID or Generation Unit ID.</p> <p>The valid codes for the 3-digit Participant Generation Unit IDs are:</p> <p>ARB Arklow Energy Ltd</p> <p>ATW Irish Power Systems Ltd (Arthurstown)</p> <p>BA1 Glanbia Plc</p> <p>BEA Portfinch Ltd</p> <p>BG1 Bord Gais</p> <p>BG2 Bord Gais</p> <p>BG3 Bord Gais</p> <p>BG4 Bord Gais</p> <p>BG5 Bord Gais</p> <p>CGU Aeolus Energy Ltd (Curraghraigue)</p> <p>CLL Cuillalea Windfarm Ltd</p> <p>CM1 Gineadeoiri Gaoithe Teo. (Conalaght)</p> <p>CNS Hibernian Wind Power Ltd (Carnsore)</p> <p>CO1 Ganderoy Ltd (Corney)</p> <p>CP1 CM Power</p> <p>DGA Independent Biomass Systems Ltd</p> <p>KST Corr na Gaoithe (Sonnagh Old)</p> <p>LG1 Largan Hill Windfarm Limited</p> <p>LHY Arrakis Ltd (Meenadreen)</p>

	MMR Moanmore Windfarm (Kilrush Energy LTD) MT2 Redwind Energy Ltd (MT2) (Meenanilta) MTA Redwind Energy Ltd (Meenanilta) MXE Matrix Energy Paternship No. 1 (Raheen Barr) RO1 Dedondo Ltd (Culliagh) SIL Irish Power Systems Ltd (Sillot Hill Power station) TU2 Tursillagh 2 Ltd (Saorgas LTD) WAP Dan Twomey Waterpower Engineering Ltd WAS Askeaton Power GAR Gartnaneane Windfarm 1 GA2 Gartnaneane Windfarm 2 CN1 Coomatallin Windfarm Ltd. KBS Greenogue Windfarm (Kilbranish) MG1 Mount Eagle Windfarm BTN Greestar Energy AW1 Altagowlan Windfarm CE1 Bearna Gaoithe Teo MV1 Moneenatieve Windfarm BL2 Waterfern Wndfarm (Black Banks 2) MS1 Meenacloghspar Windfarm Ltd. GBY Marren Engineering LTD GN1 SWS GNEEVES LTD CY1 Guestvoy LTD BH1 Jaroma Windfarm LTD BV1 North Tipperary Windfarm LTD
Length	9

MCRs to be Re-Issued

MCR 112 Changes

See separately issued version 1.2 of this MCR.

Detail of Change Request

In order to introduce the Single Electricity Market there are a number of changes required to the existing Retail Market processes. This MCR relates to the Market Process surrounding Data Aggregation.

The current procedures for MPD 16:-

MPD 16 (1.1) – Data Aggregation for QH Meters Export,
MPD 16 (1.2) – Data Aggregation for QH Meters Import,
MPD 16 (1.3) – Data Aggregation for NQH Meters and Unmetered,

will be replaced by the following:-

MPD 16 (2.1) Data Aggregation

The new procedure will combine Data Aggregation for QH meters (Import and Export), NQH meters and Unmetered consumption across each of:

D+1 Indicative Data Aggregation

D+4 Initial Data Aggregation

M+4 Data Re-Aggregation

M+13 Data Re-Aggregation

The Data Aggregation process will utilise a set of Market Messages, the 59x series, which will be generic across each aggregation. In addition there will be a Settlement Run Indicator in the body of each message to indicate the originating procedure. This Settlement Run Indicator will contain values as follows:

10 = Indicative Aggregation

20 = Initial Aggregation

30 = Re-aggregation at M+4

40 = Re-aggregation at M+13

50 = Ad Hoc Aggregation

These changes will be reflected in the relevant market baseline products.

Detailed changes for new process MPD 16 (2.1) – Data Aggregation:-

New functions and events will be added to create a new process MPD 16 (2.1).

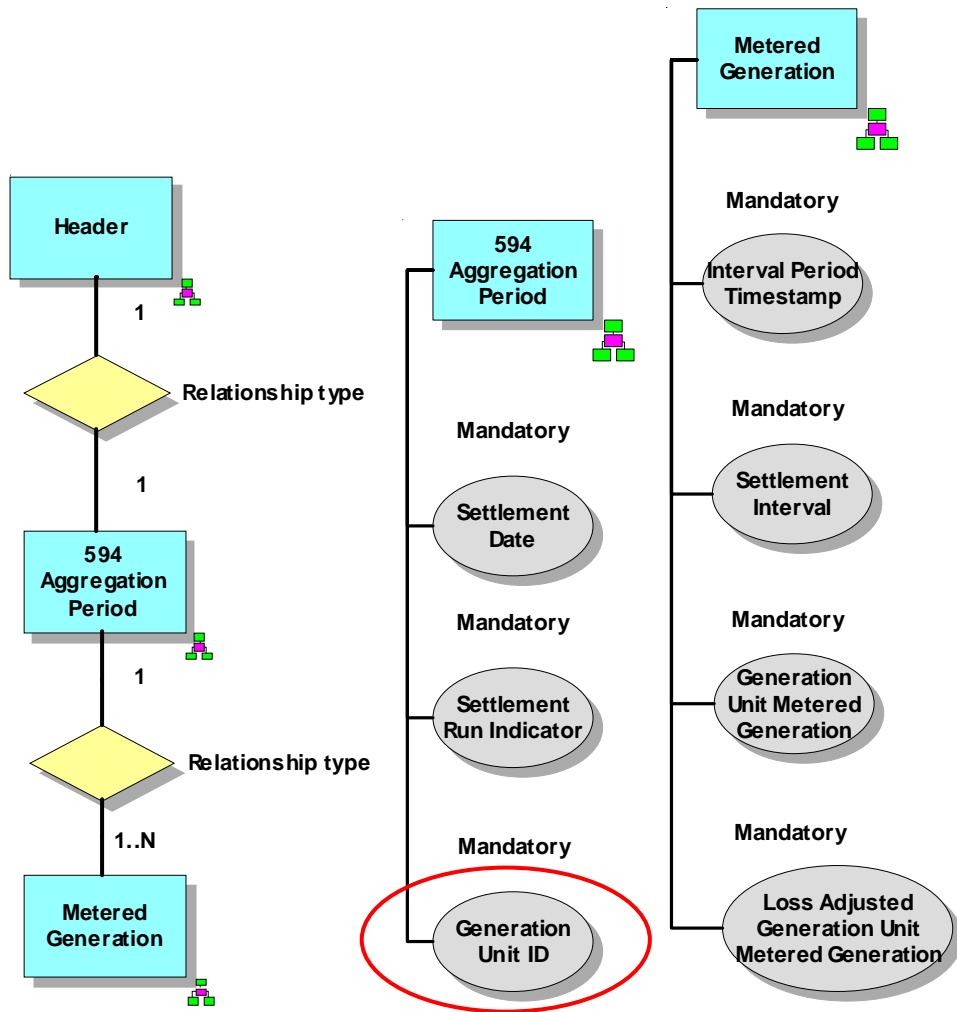
These changes are described below (from page 4), containing:-

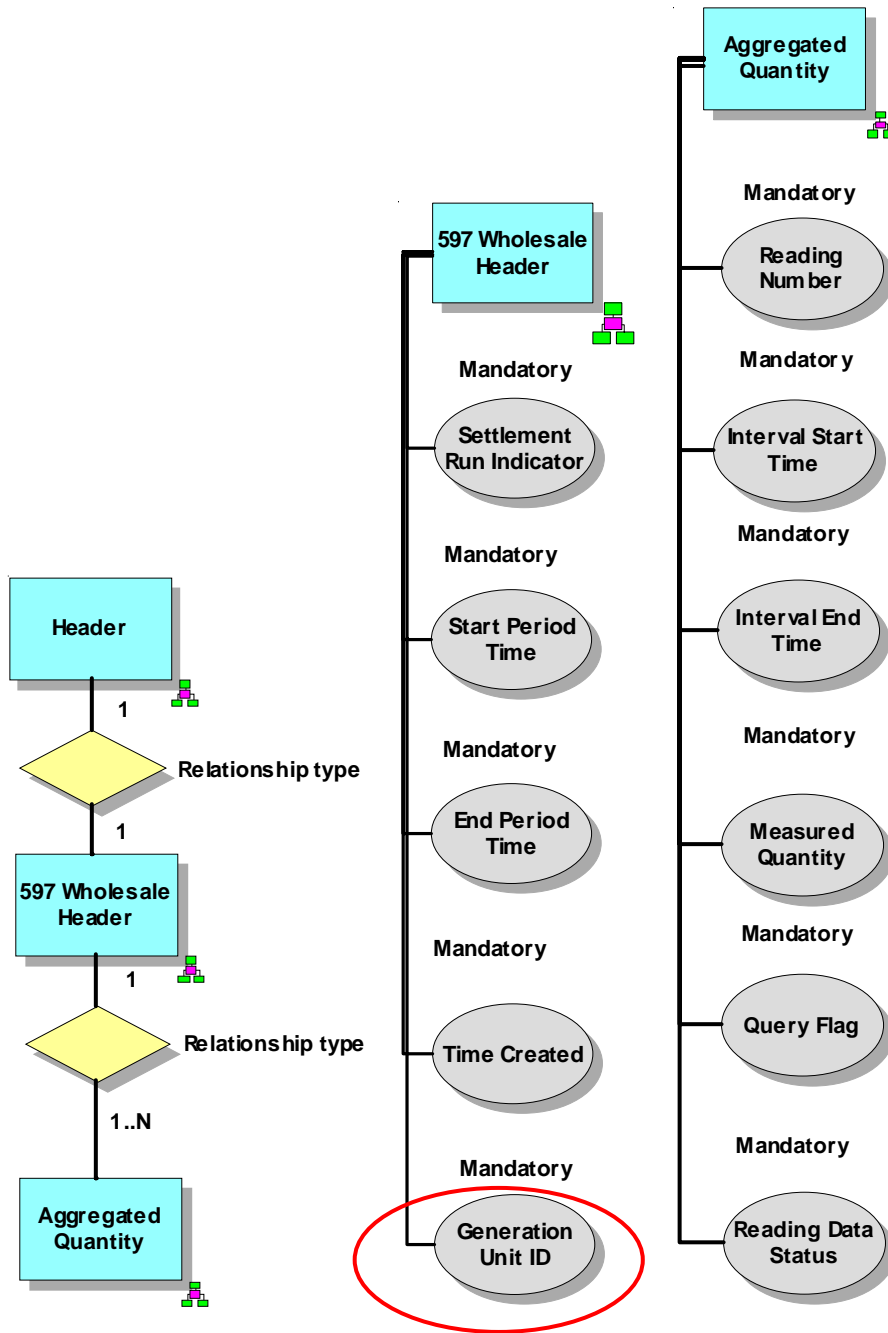
1. History of Changes
2. ARIS Process Flow Diagram (ARIS screenshot)
3. ARIS Process Flow Diagram – Supporting Text
4. Supplementary Information
5. Market Message Structures
 - 5.1 MM590
 - 5.2 MM591
 - 5.3 MM594
 - 5.4 MM595
 - 5.5 MM596
 - 5.6 MM597
 - 5.7 MM598

Note: Details of new Data Items and Definitions (~~i.e. Supplier Unit ID, Generator Unit ID~~) can be

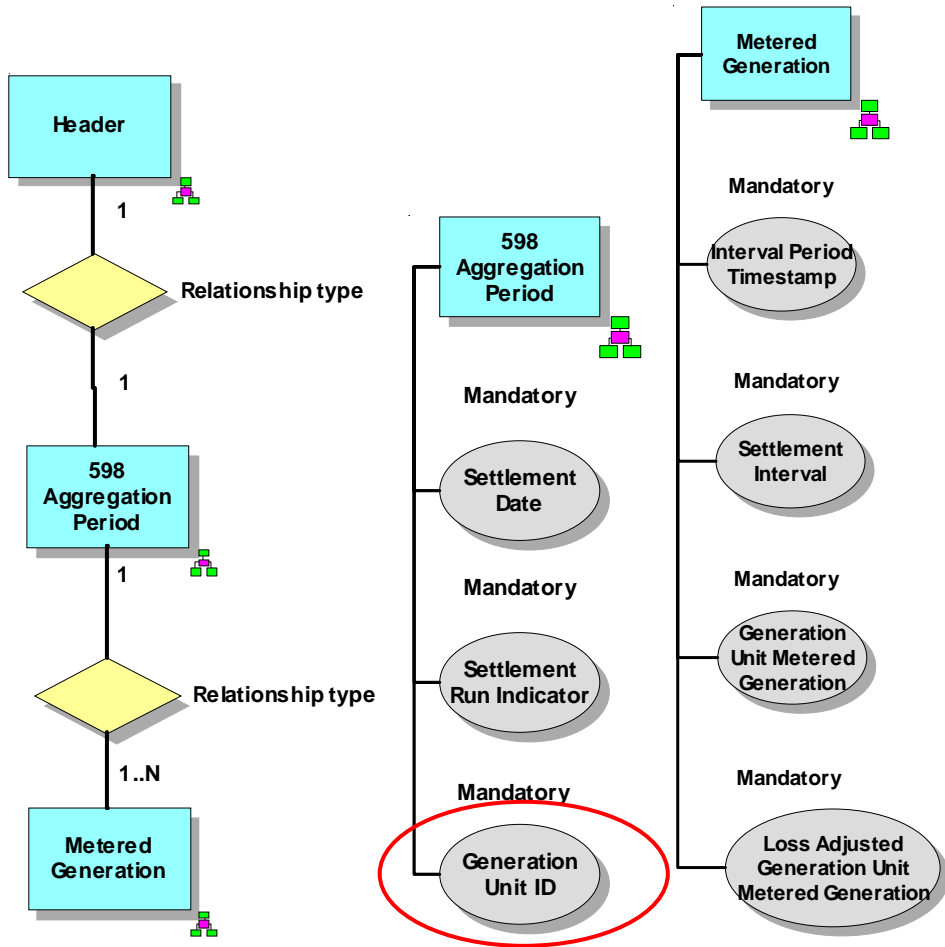
found in MCR 120.

MM 594





MM 598



MCR 120 Changes

See separately issued version 1.2 of this MCR.

Attributes	
Name	Generator Unit ID
Description	<p>Identifier for the unit to which generation will be settled. Generator Unit ID is the unique identifier referencing a generator unit. When the field is used for a non-participant generator then the Export Arrangement Reference Number will be contained.</p> <p>This data definition is not a part of any market message, but is still a valid data entity in the design. In order to send the Generator Unit ID within a market messages, it will be placed in the Generation Unit ID field.</p>
Allowable Codes on Message	As for SEM market participants
Composition Instructions	Format GU_nnnnnn
Length	9

MCR 143 Changes

See separately issued version 1.1 of this MCR.

Number		Title	Priority
MCR	143	Update to the xml schema to remove a pattern validation on the GUID Generation Unit ID field.	High

Date	Version	Reason For Change
10 th April 2007	1.0	Initial draft of the MCR document. This document has been created to remove a pattern validation within the xml schema relating to the GUID Generation Unit ID field.
11/09/2007	1.1	Updates to the change request to clarify the difference between Generation Unit ID and Generator Unit ID.

PART 1 CHANGE REQUEST:			
Name of Requesting Organisation	SEM Group		
Contact name	Theresa O'Neill		
Date Change Request Raised	15 th March 2007	Originating Discussion Request	
		DR	141

Detail of Change Request
<p>The data definition for the Generator Unit ID field was baselined in the Retail Market Design at version 6.0, as detailed within MCR 120, as part of the suite of changes to satisfy new requirements of SEM implementation.</p> <p>The draft XML schema issued on the 1st of March includes provision for a pattern validation on the GUIDGeneration Unit ID message field to match the new SEM Participant GUID Generator Unit ID format of GU_nnnnnn.</p> <p>As the GUID Generation Unit ID field will be used to contain both: Pre-SEM Participant Generator Unit ID Generation Unit ID 3 digit values, and also 4 digit Export Arrangement IDs for Non Participant Generator sites, and SEM Generator Unit IDs. As such it is proposed that this pattern validation is removed. The GUID Generation Unit ID field will remain as a 9 long field in the XML, this will allow this field to be populated in xml with anything from 0 to 9 characters.</p> <p>Note: the data definition within the Market Design will remain as is.</p>

MCRs with minor supporting text changes

MCR 060 Changes



MCR 0060 - New
Message to contain c

Additional Fields that may be included:

SSAC

Connection System Code

DLF Code

Transformer Loss Factor

Technical Contact Name

Technical Contact Details

MPRN Level Info

- MEC (Maximum Export Capacity)
- **Generation Unit ID** ~~Generator Unit ID~~
- Generator Unit Aggregation Code

MCR 066 Changes



MCR 0066 - Provision
of Generator messag

WP 0012 To nominate / denominate a Supplier as a recipient of Generator messages

Mandatory details:

- Generator Name, Address, Telephone, Email
- Generator Market ID
- **Generator Unit ID(s)** ~~Generation Unit ID(s)~~ (one or many Generator Unit IDs may be included but they must be all a subsidiary of the main Generator stated above)
- * Name of authorizing officer for the Generator
- * Signature of authorizing officer for the Generator
- Supplier Name, Address, Telephone, Email
- Supplier Market ID
- * Name of authorizing officer for the Supplier
- * Signature of authorizing officer for the Supplier
- Option to "Nominate" or "Denominate"
- Required date from which the change should take effect. This required date should be no less than 10 working days from the date of receipt of a valid application to permit any required testing to take place.

MCR 077 Changes



MCR 0077 Remove
the drop down list fro

Change Request Number	Title	Priority
MCR 0077	Remove the drop down list from the Generator Unit ID Generation Unit ID field in the webforms.	Medium

Date	Version	Reason For Change
02/02/2006	1.0	Document created.
11/09/2007	1.1	Change request updated to change of references of Generator Unit ID to Generation Unit ID.

PART 1 CHANGE REQUEST:

Name of Requesting Organisation	ESB Networks		
Contact name	Brona McKnight		
Date Change Request Raised	02/02/2006	Originating Discussion Doc	DR 0101

Detail of Change Request

Change to the webforms is required after MPCC v 11 release to remove the drop down list from the ~~Generator Unit ID~~ **Generation Unit ID** field in the webforms. A work around is in place at the moment which will allow Market Participants to enter a generator code not contained in the drop down list. However it is preferable to remove the drop down list completely from the Webforms.

Note: the field **Generation Unit ID** is incorrectly labelled ~~Generator Unit ID~~ on the webforms.

Reason for Change Request

The reason for removing the drop down list is to allow for new ~~Generator Unit ID~~ **Generation Unit ID's** which may not be in this drop down list to be added by Market Participants. The validation of the ~~Generator Unit ID~~ **Generation Unit ID** field has already been removed in the schema but the drop down list remains in this field on the Webforms.

Identification of Baseline Products Impacted

XML Schema 5.0

Guidance Documents Version 5.0

Description of Trading & Settlement Code Impact (if any)

MCR 094 Changes



Draft MCR 94 for
MPD 2 v1.2.doc

Web Form Updates

Supplier Unit will be added to the Web form for the 010 Market Message. (n.b. ~~Generator Unit ID~~ **Generation Unit ID** will be removed).

“Supplier Unit ID” will be inserted above SSAC, as follows:-

The screenshot shows a web application window titled "Applet Viewer: pkg/com/ESB/WebForm/MIM010/WebForm/WebForm010.class". The main content area is titled "Message 010 - Registration Request". The form is organized into several tabs: "Party Contact Details", "Meter Point Address *", and "Meter ID". Under "Party Contact Details", there are sub-tabs for "Technical Contact Details", "Notification Address", and "Technical Address". The "Main *", "Customer Name *", and "Customer Contact Details" sub-tabs are active. The form contains the following fields:

- MPRN * (text input)
- Supplier MPID * (text input with value "S02")
- Required Date (DD/MM/YYYY) (text input)
- Economic Activity Indicator (dropdown menu)
- Change Of Tenant / Legal Entity * (dropdown menu)
- Supply Agreement * (dropdown menu)
- Generation Unit Aggregation Code (dropdown menu)
- Supplier Unit ID * (dropdown menu)
- SSAC * (dropdown menu)
- CoS Estimate Acceptable (dropdown menu)
- CoS Read Arrangement (dropdown menu)
- Meter Configuration Code (dropdown menu)
- Medical Equipment Special Needs (dropdown menu)
- Customer Service Special Needs (dropdown menu)
- MP Business Reference * (text input with a browse button "...")

At the bottom of the form, there are three buttons: "Reset", "Load Message", and "Create Message". A status bar at the very bottom indicates "Applet started."

MCR 095 Changes



Draft MCR 95 for
MPD 6 v1.2.doc

Web Form Updates

Supplier Unit will be added to the Web form for the 010 Market Message. (n.b. ~~Generator Unit ID~~
Generation Unit ID will be removed).

“Supplier Unit ID” will be inserted above SSAC, as follows:-

Applet Viewer: pkg/com/ESB/WebForm/MIM010/WebForm/WebForm010.class

Applet

Message 010 - Registration Request

Party Contact Details | Meter Point Address * | Meter ID

Technical Contact Details | Notification Address | Technical Address

Main * | Customer Name * | Customer Contact Details

MPRN *

Supplier MPID * Required Date (DD/MM/YYYY)

Economic Activity Indicator

Change Of Tenant / Legal Entity * Supply Agreement *

Generation Unit Aggregation Code

Supplier Unit ID * SSAC *

CoS Estimate Acceptable

CoS Read Arrangement

Meter Configuration Code

Medical Equipment Special Needs

Customer Service Special Needs

MP Business Reference *

Reset Load Message Create Message

Applet started.

MCR 096 Changes



Draft MCR 96 for
MPD 20 v1.2.doc

Web Form Updates

Supplier Unit will be added to the Web form for the 010 Market Message. (n.b. ~~Generator Unit ID~~
Generation Unit ID will be removed).

“Supplier Unit ID” will be inserted above SSAC, as follows:-

Applet Viewer: pkg/com/ESB/WebForm/MIM010/WebForm/WebForm010.class

Applet

Message 010 - Registration Request

Party Contact Details | Meter Point Address * | Meter ID

Technical Contact Details | Notification Address | Technical Address

Main * | Customer Name * | Customer Contact Details

MPRN *

Supplier MPID * Required Date (DD/MM/YYYY)

Economic Activity Indicator

Change Of Tenant / Legal Entity * Supply Agreement *

Generation Unit Aggregation Code

Supplier Unit ID * SSAC *

CoS Estimate Acceptable

CoS Read Arrangement

Meter Configuration Code

Medical Equipment Special Needs

Customer Service Special Needs

MP Business Reference *

Reset Load Message Create Message

Applet started.

MCR 097 Changes



Draft MCR 97 for
MPD 15 v1.2.doc

ARIS Process Flow Diagram – Supporting Text

Details of the amended processes and new processes where the Description expands on the Name are listed below :-

1.

Name	Report to Data Collector if not received prior to aggregation
Description	Report to Data Collector if not received prior to aggregation

2.

Name	Distribute import interval data to Supplier
Description	<p>For each QH meter where import occurs on an export site that is netted for DUoS purposes then both gross and net import kWh are communicated to the Supplier for active power on the 341 message. Where export exceeds import in an interval then the net import communicated is zero. Gross import only shall be communicated to the Supplier in all cases for:</p> <ul style="list-style-type: none"> • Active power where there is not netting for DUoS purposes • Reactive power <p>Where a Transformer Loss factor is to be applied to kW and kVA readings then the values after the application of the factor will be sent. These values are used in aggregation. Import and Export QH data is distributed separately for a specific read date as and when a complete set of data is available. For Import data the 341 Market Message will not contain data within the Generator MPID and Generator Unit ID Generation Unit ID fields.</p>

3.

Name	Distribute Non-Participant export interval data to Supplier
Description	<p>For meter points that are Non Participant Generators, market message 341 containing QH export data will be sent to the Supplier nominated in the export arrangement. Where the output sales have been split, 341 messages containing the split QH export data will be sent to the Supplier nominated in the export arrangement. Where there are percentage split export arrangements in place, the Active Power split will be calculated and populated on a 341 market message per export arrangement. There will be no Reactive Power on these 341 messages. For Non-Participant Generator Export data the 341 Market Message will not contain data within the Generator MP ID field but will contain an Export Arrangement reference number within the Generator Unit ID Generation Unit ID field.</p>

7.

Name	Distribute Participant export interval data to Generator
Description	<p>For meter points that are Participant Generator sites all export QH data will be sent to the Generator following validation. For Participant Generator Export Data the 341 market message will contain the Generator MPID in the MPID field and the Generator Unit ID Generation Unit ID in the Generation Unit ID field.</p>

8.

Name	Distribute import interval data to TSO
Description	A copy of the Import data sent to the Supplier will be sent to the Transmission System Operators following validation.

MCR 132 Changes



MCR 132 Updates to
Meter Point Registrat

102R Valid Codes

Reject Reason

AMM – The Meter Point Address on the message does not match that held by DSO for the MPRN

COS – The last Change of Supplier was effective less than 20 days of receipt of this registration message

ICE – A permitted value for Estimate Acceptable has not been provided.

IDT – The Required Date on registration message is greater than 40 days in the future or is more than 3 days ago where a customer read is provided

IGU – The Generator Unit data stored in the Generation Unit ID field on the message does not match that held for the MPRN

IMF – The CoS Read Arrangement is 'MC' but the requested Meter Configuration Code is not valid

IMP – The MPRN does not exist or is for a Grouped Un-metered site (either at GMPRN or TMPRN level)

IMS – The MPRN status is not Energised or De-energised.

IRA – (i) The CoS Read Arrangement specified on registration message must be CR (Customer Read), SC (Scheduled Read), SP (Special Read) or MC (Meter Configuration Change).

IRA – (ii) CoS Read Arrangement 'CR' must not be specified for MD sites

IRA – (iii) CoS Read Arrangement 'CR' or 'SP' must be accompanied by a valid Required Date

NSA – The Supplier has not warranted that a Supply Agreement exists

CIP – A registration from another supplier is being processed for this MPRN

QHM – A CoS Read Arrangement was provided for a QH metered site

SAR – The Supplier submitting the registration is already registered to this MPRN

SNK – The Supplier Id is not known

SSS – SSAC is not allowed for use by the Supplier Unit or for the Settlement Class of the Meter Point

IEA – Invalid / incomplete EAI Code

TSR-Trading Site Rejected

Please Note: The 010 message can also be rejected for invalid / incomplete Data in the scenarios as indicated below

IID – The Customer is a Person but the request did not include a Customer Last Name

IID – The Customer is an Organisation but the request did not include a Customer Name Org_1

IID – Customer Name details provided contained a mixture of Person and Organisation fields

IID – A User rejected the request because data was invalid or incomplete

MCR 134 Changes



MCR 134 Changing
the description of Rej

102R Valid Codes

Reject Reason

AMM – The Meter Point Address on the message does not match that held by DSO for the MPRN

COS – The last Change of Supplier was effective less than 20 days of receipt of this registration message

ICE – A permitted value for Estimate Acceptable has not been provided.

IDT – The Required Date on registration message is greater than 40 days in the future or is more than 3 days ago where a customer read is provided

IGU – The Generator Unit ID data stored in the Generation Unit ID field on the message does not match that held for the MPRN

IMF – The CoS Read Arrangement is 'MC' but the requested Meter Configuration Code is not valid

IMP – The MPRN does not exist or is for a Grouped Un-metered site (either at GMPRN or TMPRN level)

IMS – The MPRN status is not Energised or De-energised.

IRA – (i) The CoS Read Arrangement specified on registration message must be CR (Customer Read), SC (Scheduled Read), SP (Special Read) or MC (Meter Configuration Change).

IRA – (ii) CoS Read Arrangement 'CR' must not be specified for MD sites

IRA – (iii) CoS Read Arrangement 'CR' or 'SP' must be accompanied by a valid Required Date

NSA – The Supplier has not warranted that a Supply Agreement exists

CIP – A registration from another supplier is being processed for this MPRN

QHM – A CoS Read Arrangement was provided for a QH metered site

SAR – The Supplier submitting the registration is already registered to this MPRN

SNK – The Supplier Id is not known

SSS – SSAC is not allowed for use by the Supplier Unit or for the Settlement Class of the Meter Point

IEA – Invalid / incomplete EAI Code

TSR-Trading Site Rejected

Please Note: The 010 message can also be rejected for invalid / incomplete Data in the scenarios as indicated below

IID – The Customer is a Person but the request did not include a Customer Last Name

IID – The Customer is an Organisation but the request did not include a Customer Name Org_1

IID – Customer Name details provided contained a mixture of Person and Organisation fields

IID – A User rejected the request because data was invalid or incomplete